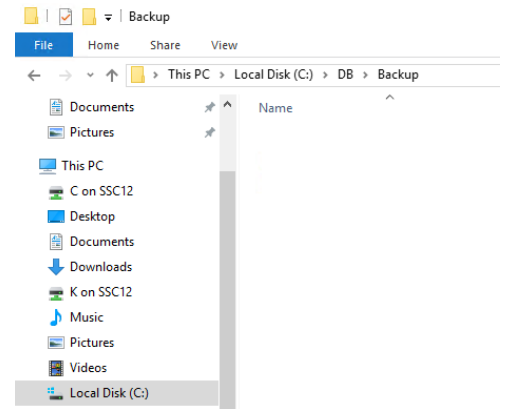


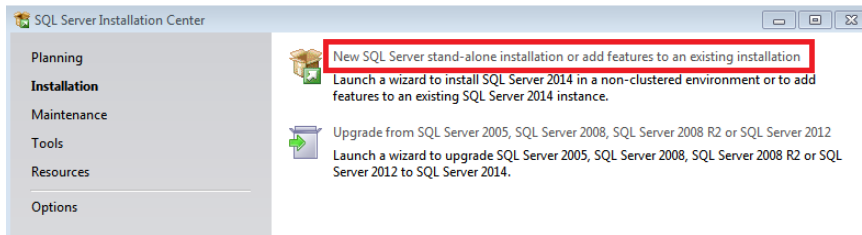
# SQL Server Installation Walkthrough

Following these instructions will install a named SQL Server Express 2017 database service instance on the local computer and SQL Server Management Studio (SSMS).

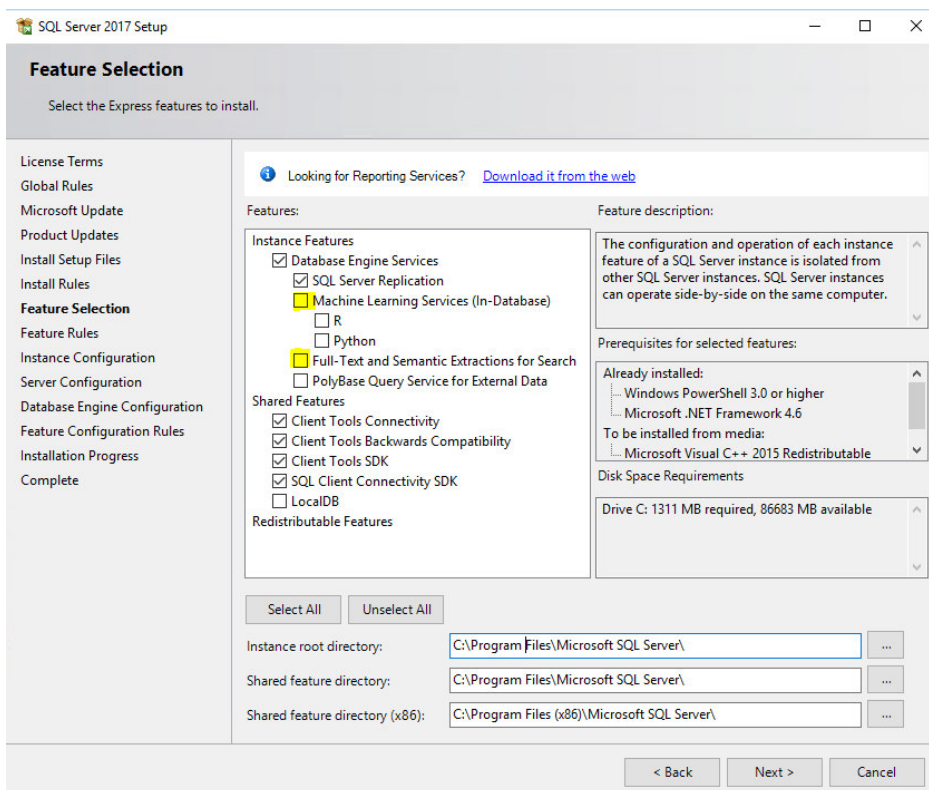
- Create a directory at C:\DB
- Create a directory at C:\DB\Backup



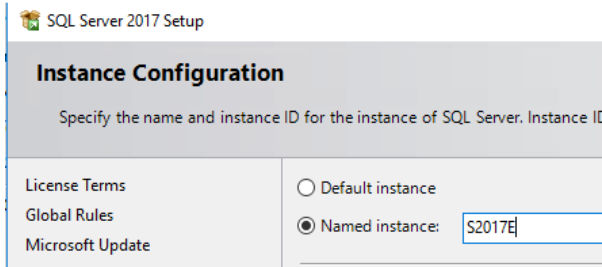
- Right click on the downloaded file SQLServer2017-SSEI-Expr.exe and choose to Run as Administrator.
- When presented with the installation option screen select the New SQL Server stand-alone... option



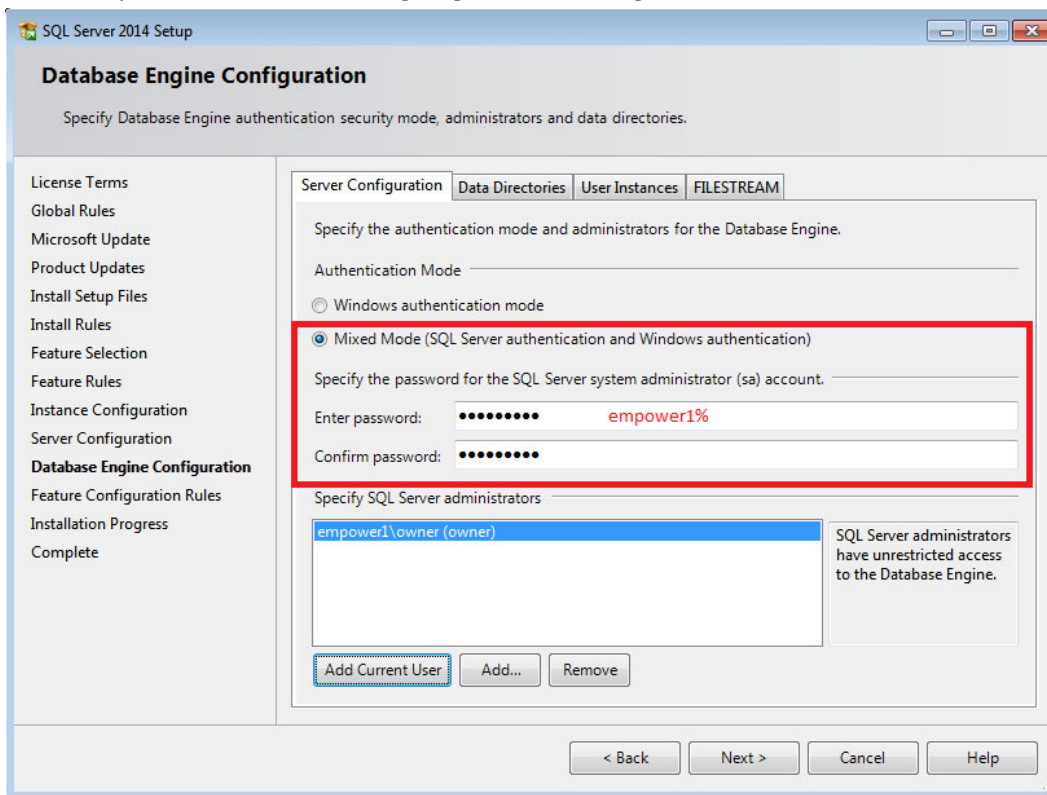
- Click the "I accept the license terms" on the next screen and click Next
- Click the "Use Microsoft Update..." checkbox and click Next
- On the feature selection screen uncheck the Machine Learning and Full-Text features and then click Next.



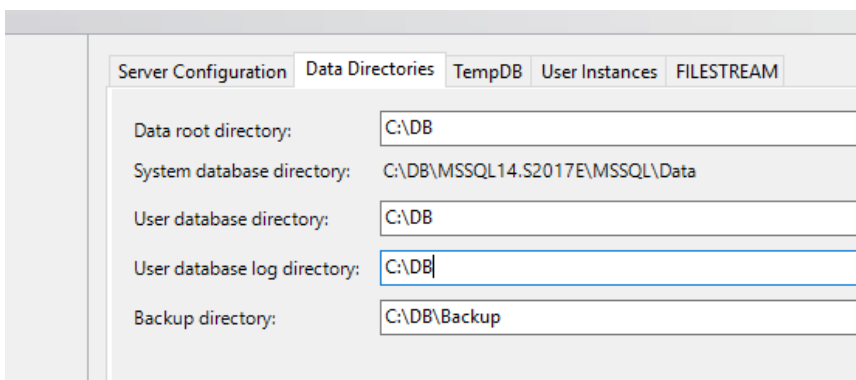
- On the instance name screen change the instance name to S2017E (to clearly identify SQL Server 2017 Express Edition in the case that multiple instances of varying editions will someday be installed). Click Next



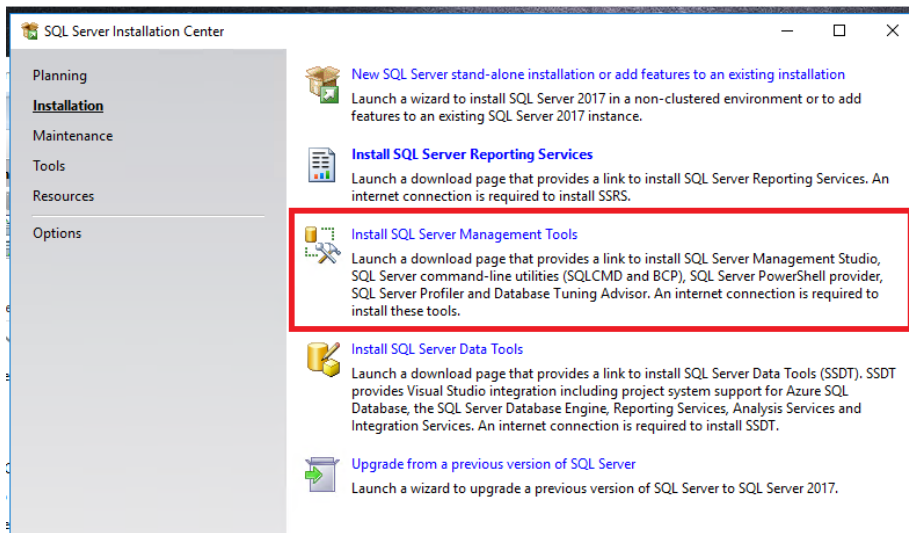
- Accept the defaults and simply click Next on the Server Configuration screen
- We need to change some of the defaults on the Database Engine Configuration screen...
- Choose Mixed Mode authentication and enter **empower1%** as the sa password.
- Hold your horses; we're also going to make changes to the Data Directories tab too.



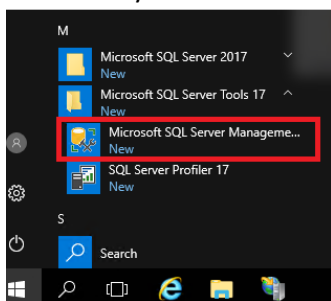
- Set the paths on the Data Directories tab as indicated here and then click Next.



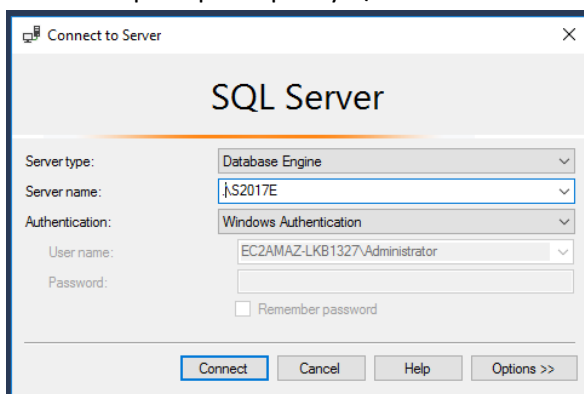
- It will take at least a couple of minutes to perform the installation. When it completes click the Close button and return to the main installation window.
- Click the following Install SQL Server Management Tools link, download and proceed with the defaults whenever prompted.



- Once that has completed close any remaining windows and then find Microsoft SQL Server Management Studio under your Windows Start button and click it.



- When prompted specify .\S2017E and Windows Authentication and then click the Connect button.



- Press F7 to show full details and, before closing, right click on the icon on the Windows task bar and choose to 'Pin'.

